



Government of India
Ministry of Earth Sciences



India Meteorological Department

PRESS RELEASE-6

Time of issue: 1330 hours IST

Dated: 25th October, 2024

Sub: Severe Cyclonic storm "DANA" crossed Odisha coast and weakened into a Cyclonic storm over north coastal Odisha

Yesterday's severe cyclonic storm "DANA" (pronounced as Dana) over northwest Bay of Bengal moved north-northwestwards and crossed north Odisha coast close to Habalikhati Nature Camp (Bhitarkanika) and Dhamara during 0130 hrs IST to 0330 hrs IST of today, the 25th October as a severe cyclonic storm with a wind speed of 100-110 kmph gusting to 120 kmph. The landfall process continued during midnight (2330 hours IST) of yesterday (24th October) till morning (0830 hours IST) of today, the 25th October.

Continuing to move further north-northwestwards, it weakened into a cyclonic storm over north coastal Odisha during forenoon (0830 hours IST) and lay centred near latitude 21.4°N and longitude 86.6°E at 1130 hrs IST of today, the 25th October, about 40 km north-northeast of Bhadrak and 70 km north-northwest of Dhamara. The maximum sustained wind speed around the centre of the cyclone is about 65-75 kmph gusting to 85 kmph.

It is likely to move nearly westwards across north Odisha and weaken gradually into a deep depression during next 06 hours.

The system is under continuous surveillance of the doppler weather radar at Paradip.

Forecast track and intensity are given in the following table:

Date/Time (IST)	Position (Lat. °N/ Long. °E)	Maximum Sustained Surface Wind Speed (Kmph)	Category Of Cyclonic Disturbance
25.10.24/1130	21.4/86.6	65-75 gusting to 85	Cyclonic Storm
25.10.24/1730	21.6/86.3	50-60 gusting to 70	Deep Depression
25.10.24/2330	21.6/85.9	30-40 gusting to 50	Depression

(i) Rainfall Warning:

- ❖ Light to moderate rainfall at most places with **heavy rainfall over to very heavy rainfall** at a few places over **Keonjhar, Mayurbhanj, Balasore, Bhadrak, Dhenkanal, Cuttack, Jajpur, Kendrapara, Angul, Nayagarh, Khorda, Puri and Jagatsinghpur** districts of Odisha on 25th October. **Extremely heavy rainfall (≥ 21 cm)** at isolated places is very likely over **Keonjhar, Mayurbhanj, Balasore and Bhadrak** districts of Odisha on 25th October.
- ❖ **Light to moderate rainfall at most places with heavy to very heavy rainfall** at a few places with **extremely heavy rainfall** at isolated places over **East & West Medinipur**, districts of Gangetic West Bengal on 25th October.

Contact: Cyclone Warning Division, Office of the Director General of Meteorology, India Meteorological Department, Ministry of Earth Sciences, E-mail: cyclonewarningdivision@gmail.com, Website: rsmcnewdelhi.imd.gov.in. Spatial rainfall distribution: Isolated: <25%, A few: 26-50%, Many: 51-75%, Most: 76-100%, Rainfall amount (mm): Heavy rain: 64.5 – 115.5, Very heavy rain: 115.6 – 204.4, Extremely heavy rain: 204.5 or more.

❖ Light to moderate rainfall at many places with **heavy to very heavy rainfall** at isolated places is likely over south Jharkhand on 25th October.

(ii) Wind Warning:

Northwest Bay of Bengal: Gale wind speed reaching 65-75 gusting to 85 kmph is prevailing and would gradually decrease becoming squally wind speed reaching 50-60 kmph gusting to 70 kmph from evening of 25th October 2024.

Along & off Odisha-west Bengal coasts and adjoining interior districts: Gale wind speed reaching 60-70 kmph gusting to 80 kmph would prevail over Balasore, Mayurbhanj, Keonjhar, Bhadrak, Kendrapara districts of Odisha and East Medinipur district of West Bengal till evening of 25th October 2024 and decrease thereafter.

Squally wind speed reaching 40-60 kmph gusting to 70 kmph would prevail over Jagatsinghpur, Cuttack, Dhenkanal, Angul & adjoining areas of Sundargarh & Khorda districts of Odisha and south 24 Parganas, West Medinipur & Jhargram districts of West Bengal till evening of 25th October and decrease thereafter.

South Jharkhand: Squally wind speed reaching 40-50 gusting to 60 kmph is very likely to prevail from afternoon of 25th till evening of 26th October.

(iii) Storm surge warning:

Storm surge of upto 1.0 m height above astronomical tide is very likely to inundate low lying areas of Bhadrak & Balasore districts of Odisha and East Medinipur districts of West Bengal during next 3 hours.

Storm surge of upto 0.5 m height above astronomical tide is very likely to inundate low lying areas of South 24-Parganas district of West Bengal during next 3 hours.

(iv) Sea Condition:

Northwest Bay of Bengal and along & off Odisha-west Bengal coasts: Sea condition is likely to be **High to Very rough** till 25th evening and improve gradually thereafter.

(v) Fishermen Warning:

- Total suspension of fishing operations over Northwest Bay of Bengal till 25th noon.
- Fishermen are advised not to venture into Northwest Bay of Bengal and along & off Odisha and West Bengal coasts on 25th October.

❖ **Post Landfall Outlook for the interior districts of North Odisha**

Light to moderate rainfall at most places with **heavy rainfall over to very heavy rainfall** at a few places over **Keonjhar, Mayurbhanj, Balasore, Bhadrak, Dhenkanal, Cuttack, Jajpur, Kendrapara, Angul, Nayagarh, Khorda, Puri and Jagatsinghpur** districts of Odisha on 25th October. **Extremely heavy rainfall (≥ 21 cm)** at isolated places is very likely over **Keonjhar, Mayurbhanj, Balasore and Bhadrak** districts of Odisha on 25th October.

Squally wind speed reaching 50-60 kmph gusting to 70 kmph is likely to prevail over **interior districts of north Odisha** from 25th October afternoon till night and decrease gradually thereafter.

❖ **Impact Expected over districts of Odisha (Baleswar, Bhadrak, Mayurbhanj, Keonjhar, Dhenkanal) and West Bengal (East & West Medinipur and Jhargram) till 25th October evening**

Contact: Cyclone Warning Division, Office of the Director General of Meteorology, India Meteorological Department, Ministry of Earth Sciences, E-mail: cyclonewarningdivision@gmail.com, Website: rsmcnewdelhi.imd.gov.in. Spatial rainfall distribution: Isolated: <25%, A few: 26-50%, Many: 51-75%, Most: 76-100%, Rainfall amount (mm): Heavy rain: 64.5 – 115.5, Very heavy rain: 115.6 – 204.4, Extremely heavy rain: 204.5 or more.

- Damage to thatched houses/ huts. Unattached metal sheets may fly.
- Breaking of tree branches and uprooting of trees. Large dead limbs blown from trees.
- Partial damage to power and communication lines.
- Damage to Kutcha and some damage to Pucca roads. Flooding of escape routes.
- Damage to vulnerable structure.
- Damage to standing crops including banana, papaya, horticultural and vegetable crops due to inundation and wind.
- Localized Flooding of roads, water logging in low lying areas and closure of underpasses mainly in urban areas of the above region.
- Occasional reduction in visibility due to heavy rainfall.
- Disruption of traffic in major cities and roadways due to water logging in roads and poor visibility due to heavy rain leading to increased travel time and incidents
- Localized Landslides/Mudslides/landslips/mud slips/land sinks/mud sinks.
- Likely disruption of marine and inland water transportation like small boats and trawlers.
- It may lead to riverine flooding in some river catchments (for riverine flooding please visit Webpage of Central Water Commission)

❖ **Action Suggested for districts of Odisha (Baleswar, Bhadrak, Mayurbhanj, Keonjhar, Dhenkanal) and West Bengal (East & West Medinipur and Jhargram) till 25th October evening**

- Total suspension of fishing operations over Northwest Bay of Bengal till 25th afternoon.
 - ✓ Fishermen are advised not to venture into Northwest Bay of Bengal and along & off Odisha and West Bengal coasts on 25th October.
- Movement in motor boats unsafe
- People in affected areas to remain indoors.
- Judicious regulation of onshore/offshore, Port and maritime activities including shipping.
- Judicious regulation of tourism activities in coastal areas.
- Judicious regulation of surface transports including railways and roadways.
- Check for traffic congestion on your route before leaving for your destination.
- Follow any traffic advisories that are issued in this regard.
- Avoid going to areas that face the water logging problems often.
- Avoid staying in vulnerable structure.

Realised weather including rainfall, wind and storm surge is given in Annexure-1.

The system is under continuous surveillance. Next Press Release will be sent at 1430 hrs IST of tomorrow, the 26th October, 2024.

Kindly visit www.rsmcnewdelhi.imd.gov.in and www.mausam.imd.gov.in for updates on the system.

Contact: Cyclone Warning Division, Office of the Director General of Meteorology, India Meteorological Department, Ministry of Earth Sciences, E-mail: cyclonewarningdivision@gmail.com, Website: rsmcnewdelhi.imd.gov.in. Spatial rainfall distribution: Isolated: <25%, A few: 26-50%, Many: 51-75%, Most: 76-100%, Rainfall amount (mm): Heavy rain: 64.5 – 115.5, Very heavy rain: 115.6 – 204.4, Extremely heavy rain: 204.5 or more.

1. Realised Rainfall:

Widespread rainfall occurred over North coastal districts with heavy to very heavy rainfall at a few places over Bhadrak, Kendrapara and Jagatsinghpur districts of North coastal Odisha, heavy rainfall at isolated places over East & West Medinipur districts of West Bengal and heavy rainfall at isolated places over Singhbhum district of Jharkhand.

24 hours cumulative rainfall realised during 0830 hours IST of 24th October to 0830 hours IST of 25th October is given below:

Odisha: Chandbali (Bhadrak) 16, Rajkanika (Kendrapara) 16, Nawana (Mayurbhanj) 14, Marsaghai (Kendrapara) 11, Basudevpur (Bhadrak) 11, Oupada (Balasore) 11, Rajnagar (Kendrapara) 10, Mohakalapada (Kendrapara) 9, Aul (Kendrapara) 8, Paradeep (Jagatsinghpur) 8, Derabis (Kendrapara) 7, Bhadrak (Bhadrak) 7, Balasore (Balasore) 7, Jajpur (Jajpur) 7, Kendrapada (Kendrapara) 7, Nilgiri (Balasore) 7, Kendrapara (Kendrapara) 7, Pattamundai (Kendrapara) 7,

Gangetic West Bengal: Diamond Harbour (South 24 Parganas) 9, Kalaikunda (IAF) (West Midnapore) 9, Kharagpur (West Midnapore) 9, Durgachack (East Midnapore) 8, Mohanpur (West Midnapore) 7, Jhargram (dist Jhargram) 7, Uluberia (Howrah) 7;

Jharkhand: Gurabandha (East Singhbhum) 7;

2. Realised maximum Wind:

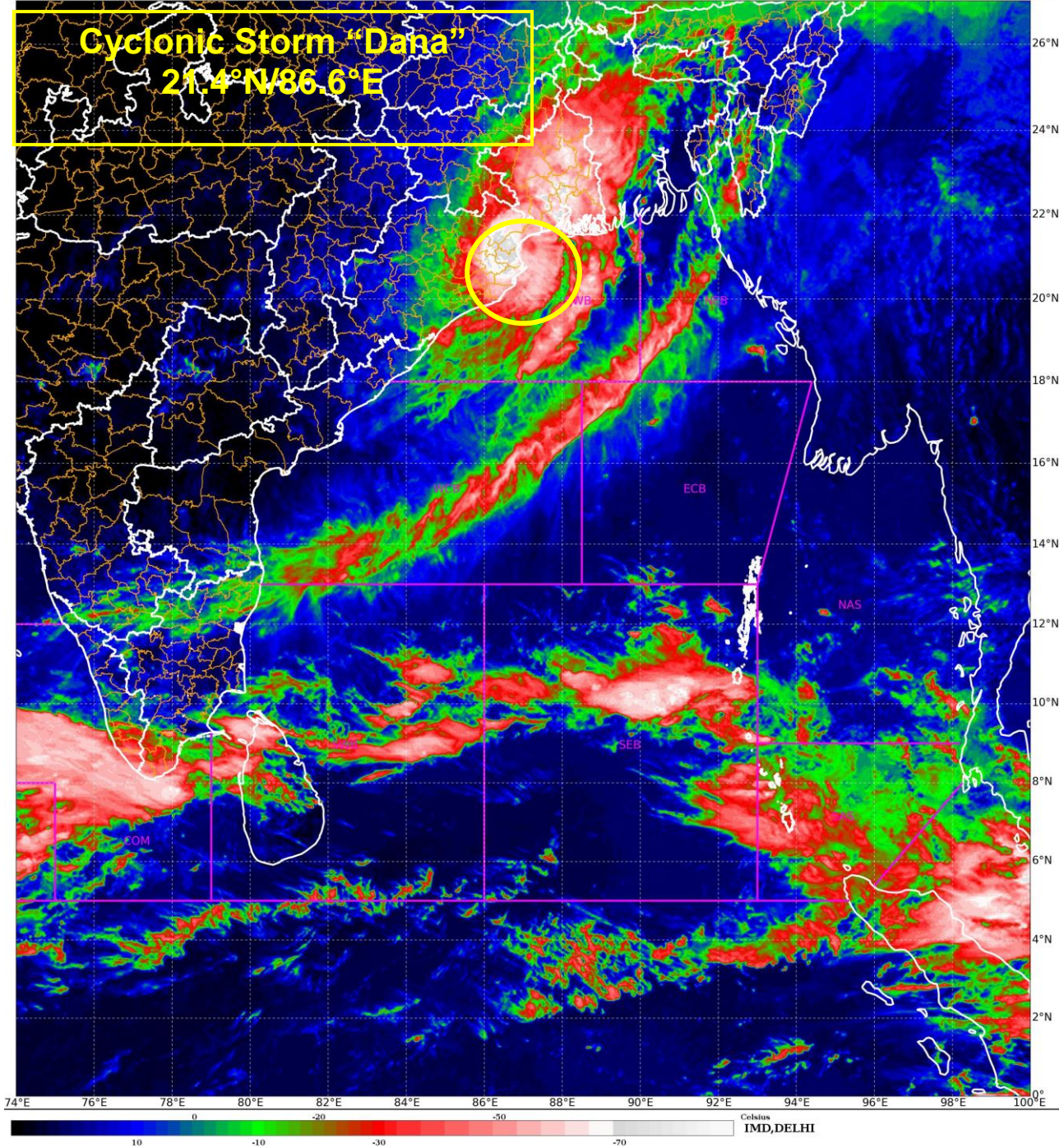
The estimated maximum sustained wind at the time of landfall over Kendrapara and Bhadrak districts of Odisha was about 100-110 kmph gusting to 120 kmph at the time of landfall.

3. Realised Storm Surge:

Maximum estimated storm surge of height 1-2 m inundated low lying areas of Kendrapara and Bhadrak districts of Odisha during landfall.

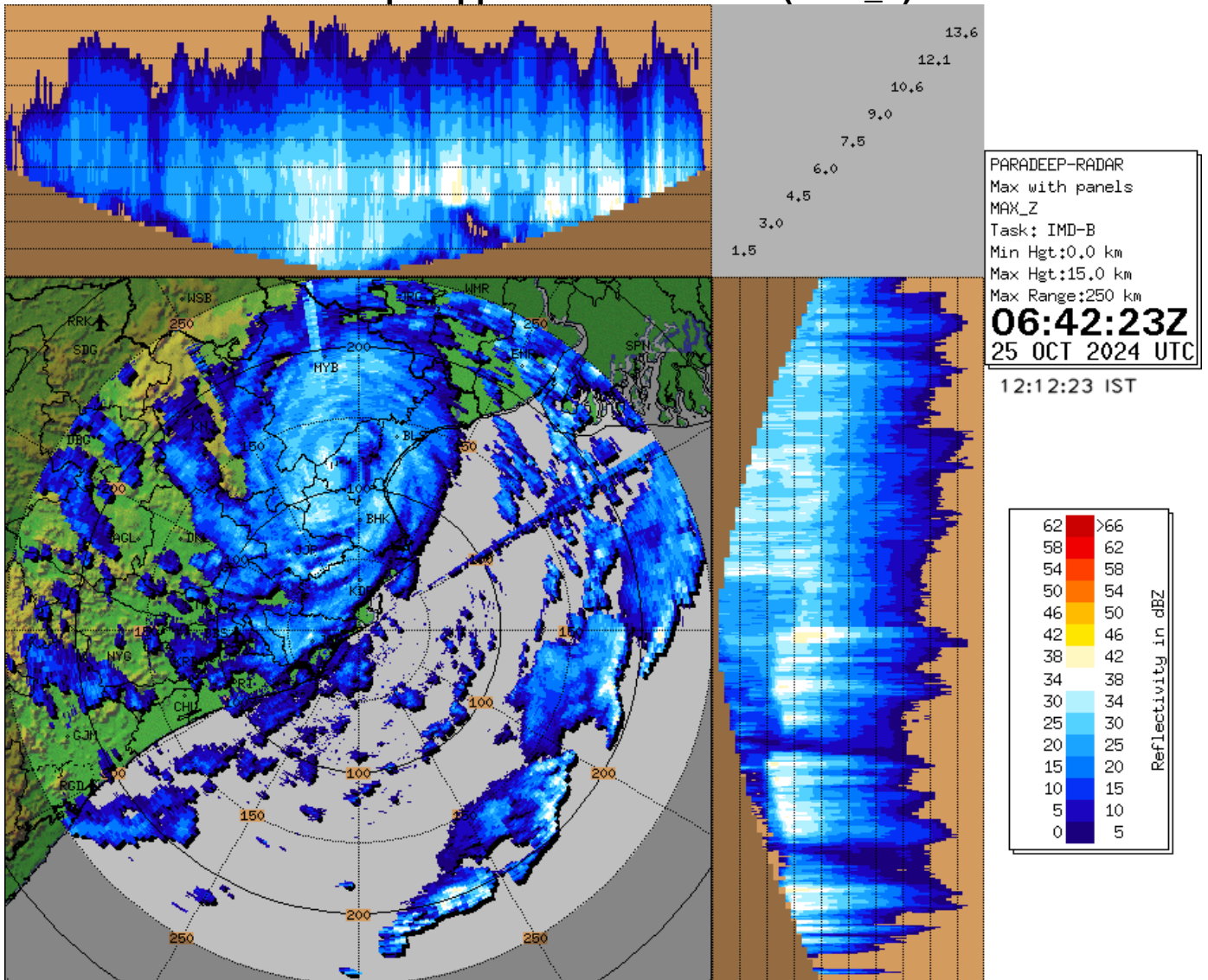
SAT : INSAT-3DR IMG
IMG_TIR1_TEMP 10.8 um
LIC Mercator

25-10-2024/(0615 to 0642) GMT
25-10-2024/(1145 to 1212) IST



Contact: Cyclone Warning Division, Office of the Director General of Meteorology, India Meteorological Department, Ministry of Earth Sciences, [E-mail: cyclonewarningdivision@gmail.com](mailto:cyclonewarningdivision@gmail.com), Website: rsmcnewdelhi.imd.gov.in. Spatial rainfall distribution: Isolated: <25%, A few: 26-50%, Many: 51-75%, Most: 76-100%, Rainfall amount (mm): Heavy rain: 64.5 – 115.5, Very heavy rain: 115.6 – 204.4, Extremely heavy rain: 204.5 or more.

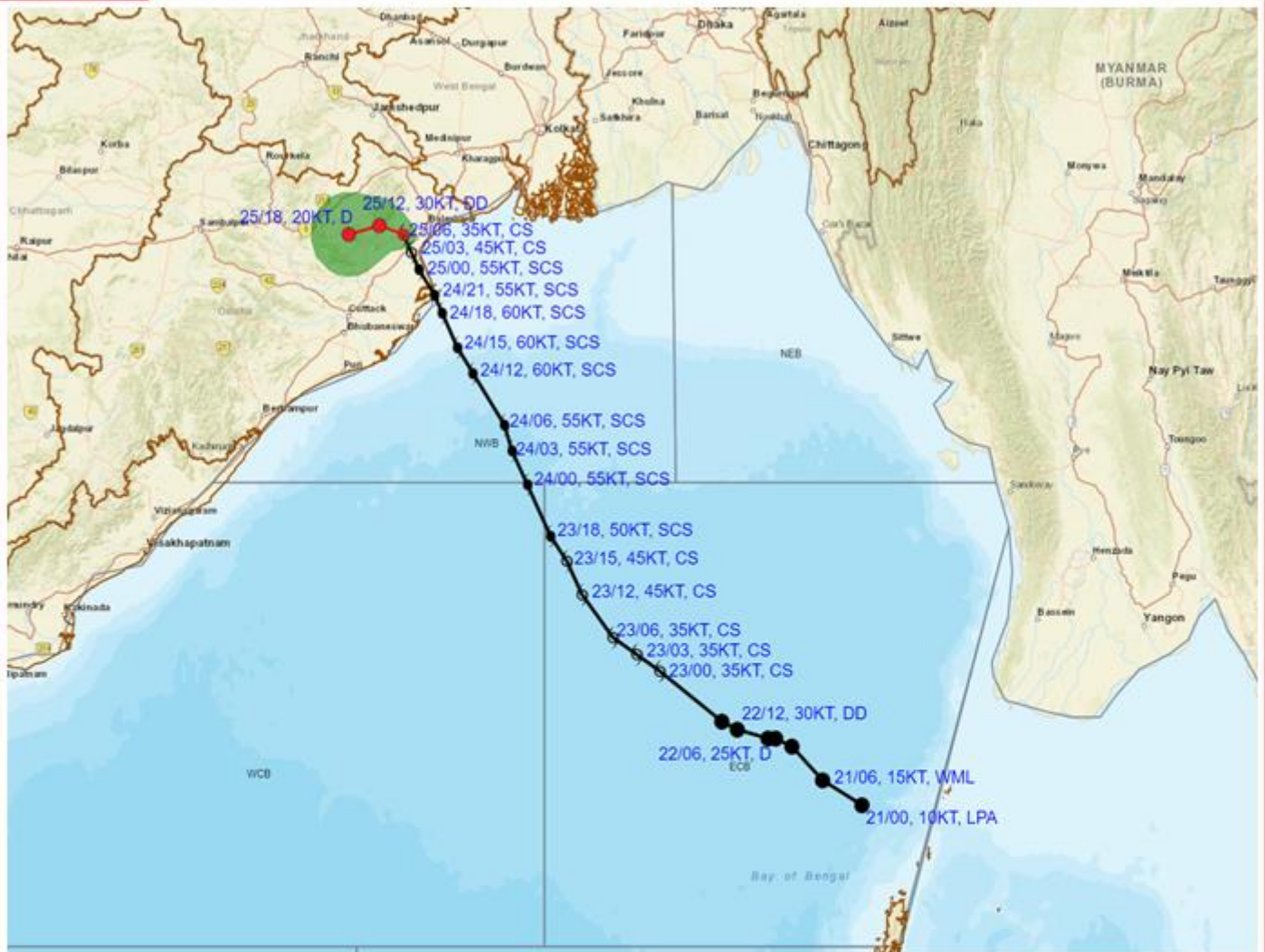
Paradip Doppler Weather Radar (MAX_Z)



Contact: Cyclone Warning Division, Office of the Director General of Meteorology, India Meteorological Department, Ministry of Earth Sciences, [E-mail: cyclonewarningdivision@gmail.com](mailto:cyclonewarningdivision@gmail.com), Website: rsmcnewdelhi.imd.gov.in. Spatial rainfall distribution: Isolated: <25%, A few: 26-50%, Many: 51-75%, Most: 76-100%, Rainfall amount (mm): Heavy rain: 64.5 – 115.5, Very heavy rain: 115.6 – 204.4, Extremely heavy rain: 204.5 or more.



OBSERVED AND FORECAST TRACK ALONGWITH CONE OF UNCERTAINTY OF CYCLONIC STORM 'DANA' OVER NORTH COASTAL ODISHA BASED ON 0600 UTC (1130 Hrs. IST) OF 25th OCTOBER 2024



DATE/TIME : IN UTC
 IST : UTC + 0530
 KT : NAUTICAL MILE S/HOUR = 1.85 KM/HOUR
 LPA : LOW PRESSURE AREA
 WML : WELL MARKED LOW PRESSURE AREA
 D : DEPRESSION (17-27 KT)
 DD : DEEP DEPRESSION (28-33 KT)
 CS : CYCLONIC STORM (34-47 KT)
 SCS : SEVERE CYCLONIC STORM (48-63 KT)
 VSCS : VERY SEVERE CYCLONIC STORM (64-89 KT)
 ESCS : EXTREMELY SEVERE CYCLONIC STORM (90-119 KT)
 SuCS : SUPER CYCLONIC STORM (≥120 KT)

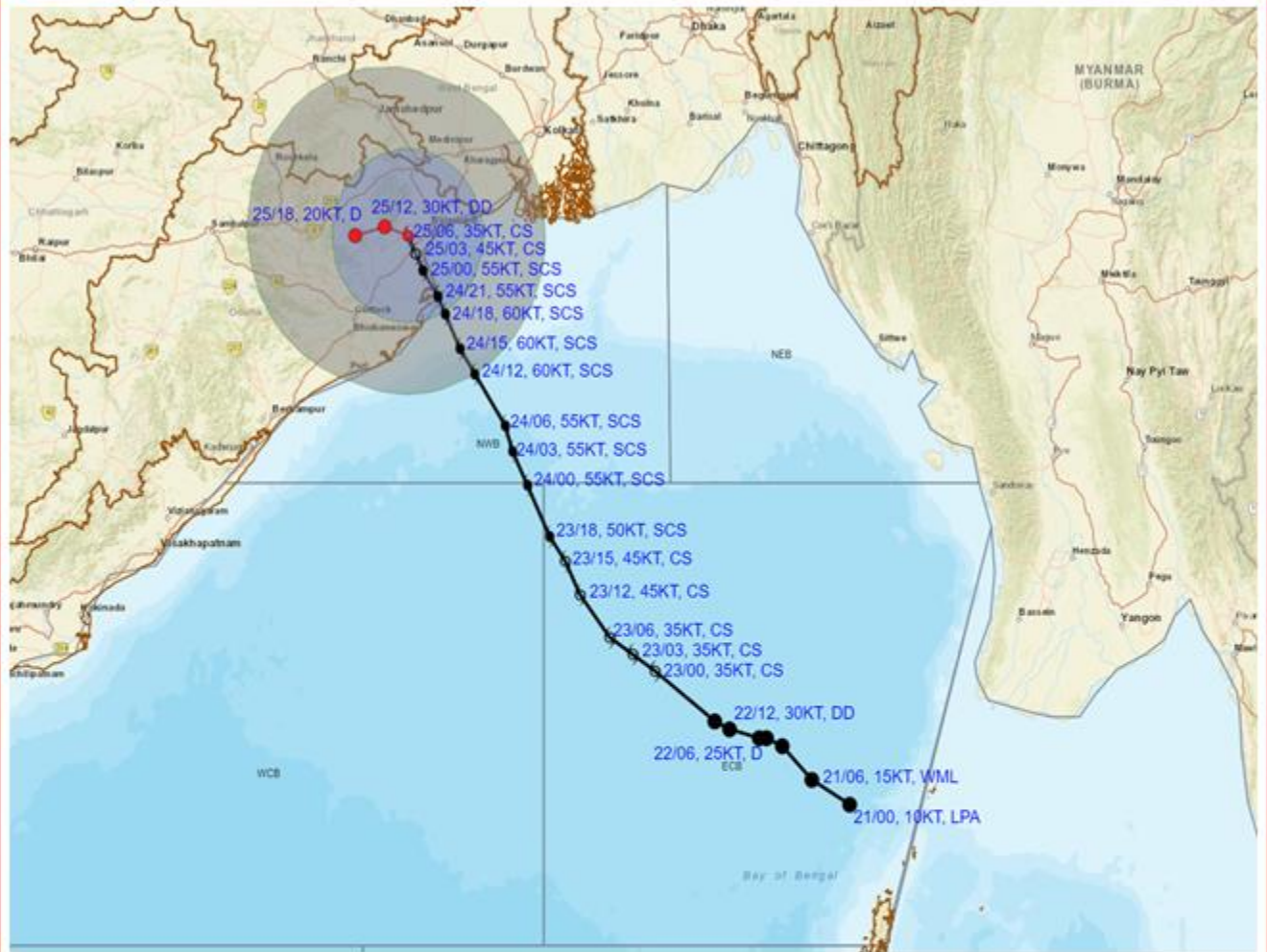
LESS THAN 34 KT
 34-47 KT
 ≥ 48 KT
 OBSERVED TRACK
 FORECAST TRACK
 CONE OF UNCERTAINTY

Forecast	DISTANCE (KM) AND DIRECTION FROM STATIONS	
Date and Time (UTC)	BHADRAK	DHAMARA
25.10.24/0600	40, NNE	70, NNW

Contact: Cyclone Warning Division, Office of the Director General of Meteorology, India Meteorological Department, Ministry of Earth Sciences, [E-mail: cyclonewarningdivision@gmail.com](mailto:cyclonewarningdivision@gmail.com), Website: rsmcnewdelhi.imd.gov.in. Spatial rainfall distribution: Isolated: <25%, A few: 26-50%, Many: 51-75%, Most: 76-100%, Rainfall amount (mm): Heavy rain: 64.5 – 115.5, Very heavy rain: 115.6 – 204.4, Extremely heavy rain: 204.5 or more.



OBSERVED AND FORECAST TRACK ALONGWITH QUADRANT WIND DISTRIBUTION OF CYCLONIC STORM 'DANA' OVER NORTH COASTAL ODISHA BASED ON 0600 UTC (1130 Hrs. IST) OF 25th OCTOBER 2024



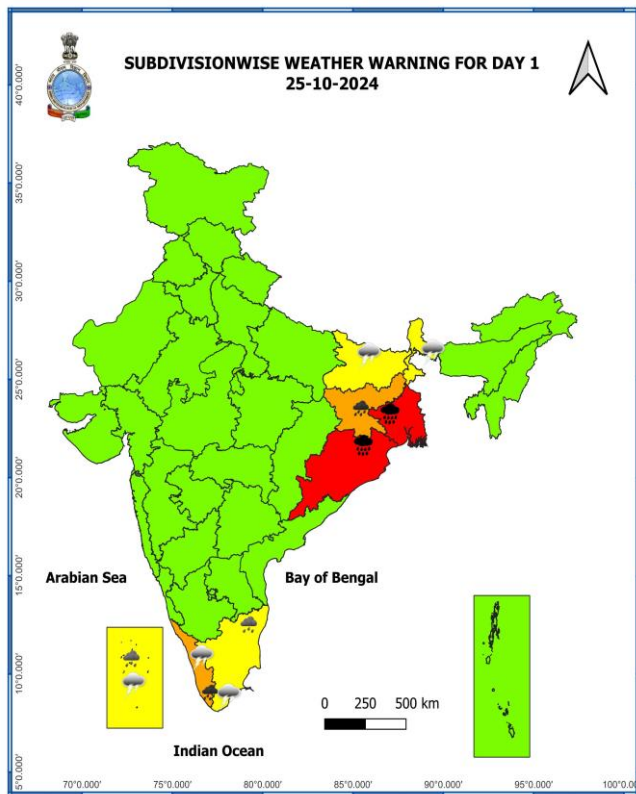
- DATE/TIME : IN UTC
 IST : UTC + 0530
 KT : NAUTICAL MILE/HOUR = 1.85 KM/HOUR
 LPA : LOW PRESSURE AREA
 WML : WELL MARKED LOW PRESSURE AREA
 D : DEPRESSION (17-27KT)
 DD : DEEP DEPRESSION (28-33 KT)
 CS : CYCLONIC STORM (34-47 KT)
 SCS : SEVERE CYCLONIC STORM (48-63 KT)
 VSCS : VERY SEVERE CYCLONIC STORM (64-89 KT)
 ESCS : EXTREMELY SEVERE CYCLONIC STORM (90-119 KT)
 SuCS : SUPER CYCLONIC STORM (≥120 KT)




- LESS THAN 34 KT
- 34-47 KT
- ⊙ ≥ 48 KT
- OBSERVED TRACK
- FORECAST TRACK
- CONE OF UNCERTAINTY
- AREA OF MAXIMUM SUSTAINED WIND SPEED:
- 28-33 KT (52-61 KMPH)
- 34-49 KT (62-91 KMPH)
- 50-63 KT (92-117 KMPH)
- ≥ 64 KT (≥118 KMPH)

IMPACT OVER THE SEA

MSW (knot/kmph)	Impact	Action
28-33 (52-61)	Very rough seas	Total suspension of fishing operations
34-49 (62-91)	High to very high seas	Total suspension of fishing operations
50-63 (92-117)	Very high seas	Total suspension of fishing operations
≥ 64 (≥118)	Phenomenal	Total suspension of fishing operations

Contact: Cyclone Warning Division, Office of the Director General of Meteorology, India Meteorological Department, Ministry of Earth Sciences, [E-mail: cyclonewarningdivision@gmail.com](mailto:cyclonewarningdivision@gmail.com), Website: rsmcnewdelhi.imd.gov.in. Spatial rainfall distribution: Isolated: <25%, A few: 26-50%, Many: 51-75%, Most: 76-100%, Rainfall amount (mm): Heavy rain: 64.5 – 115.5, Very heavy rain: 115.6 – 204.4, Extremely heavy rain: 204.5 or more.



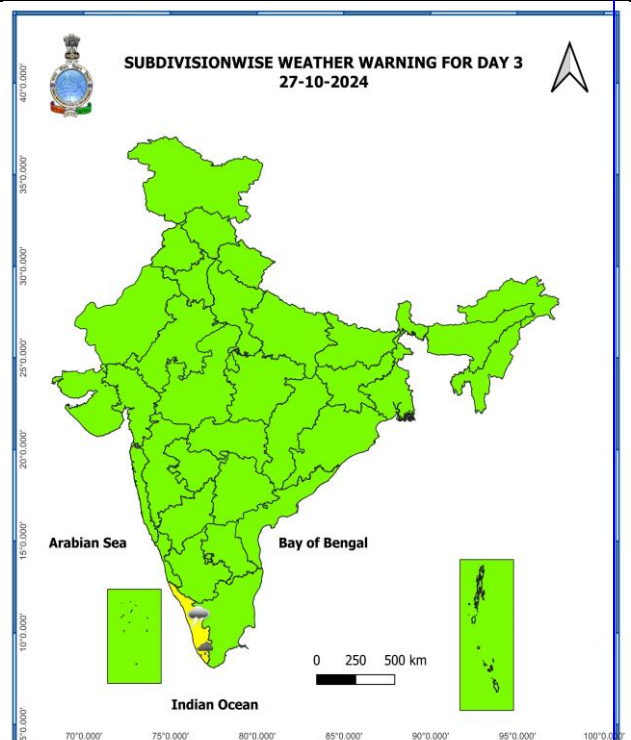
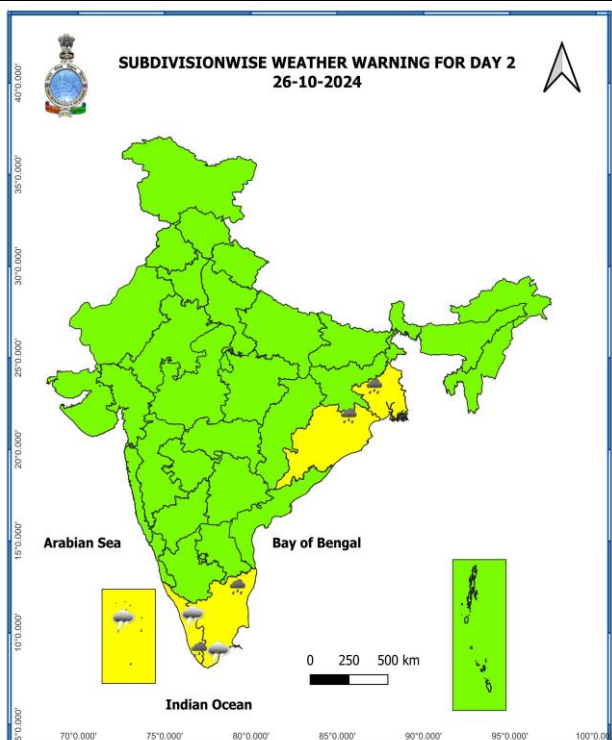
-  Heavy Rain
-  Very Heavy Rain
-  Extremely Heavy Rain

COLOUR CODED WARNING

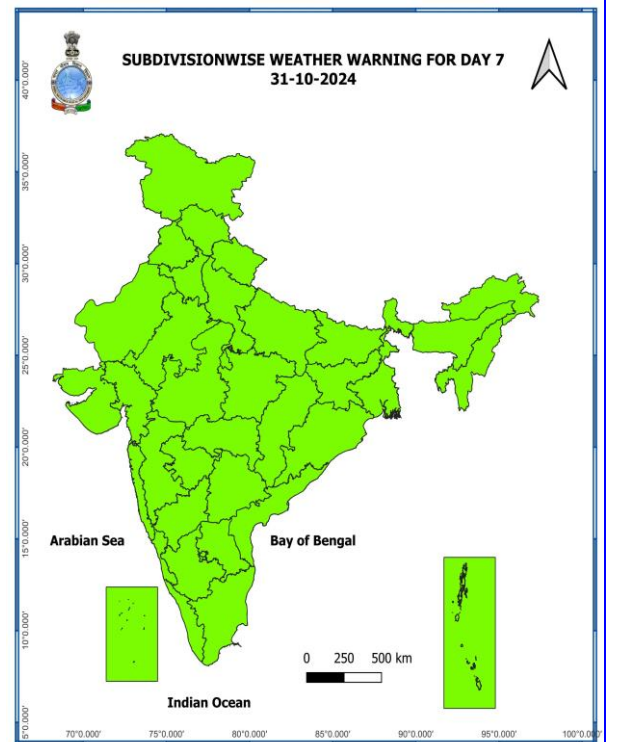
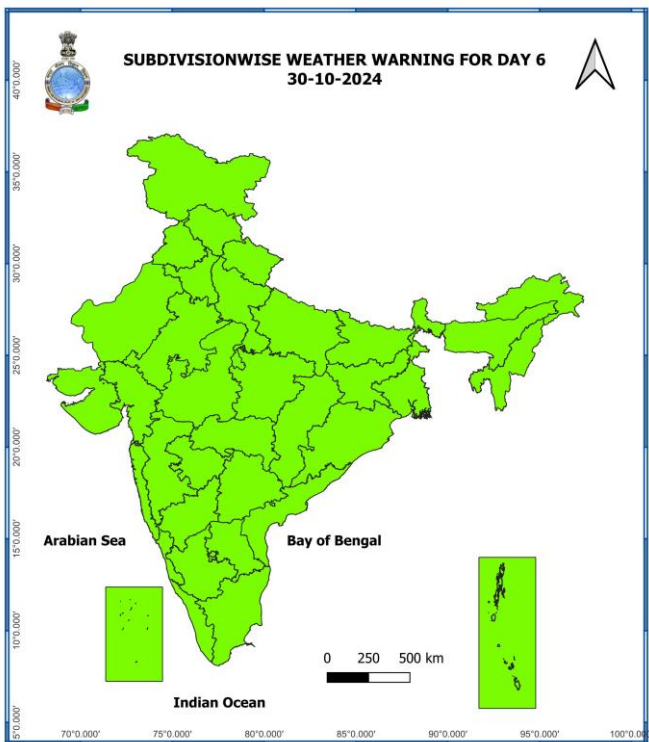
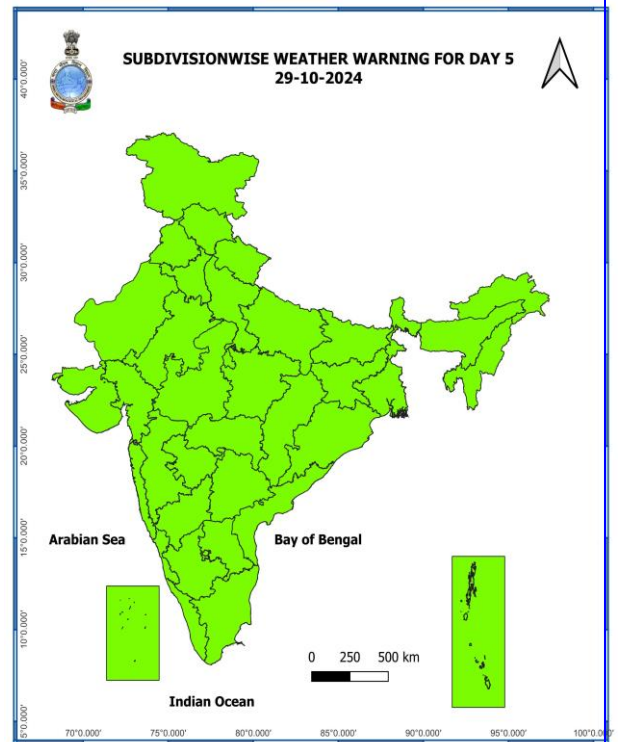
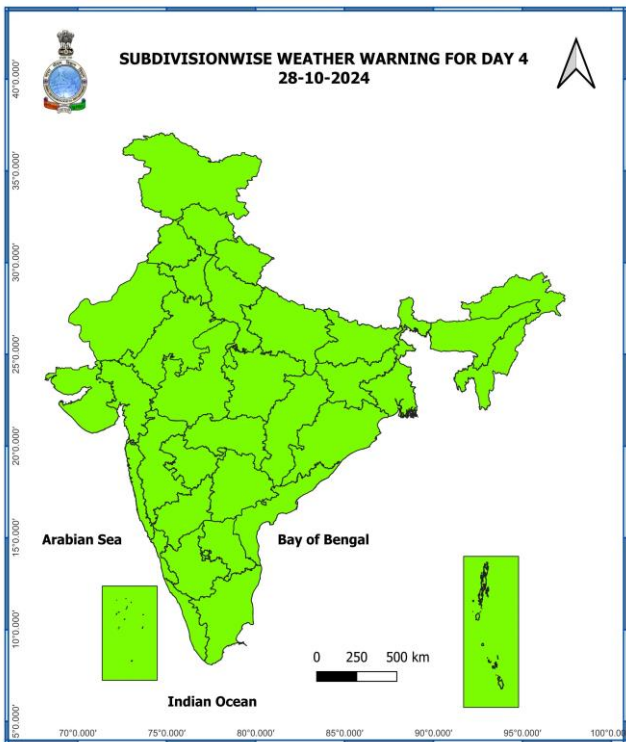
-  No Warning (No Action)
-  Watch (Be Aware)
-  Alert (Be Prepared To Take Action)
-  Warning (Take Action)

Probabilistic Forecast

Terms	Probability of Occurrence (%)
Unlikely	< 25
Likely	25 - 50
Very Likely	50 - 75
Most Likely	> 75



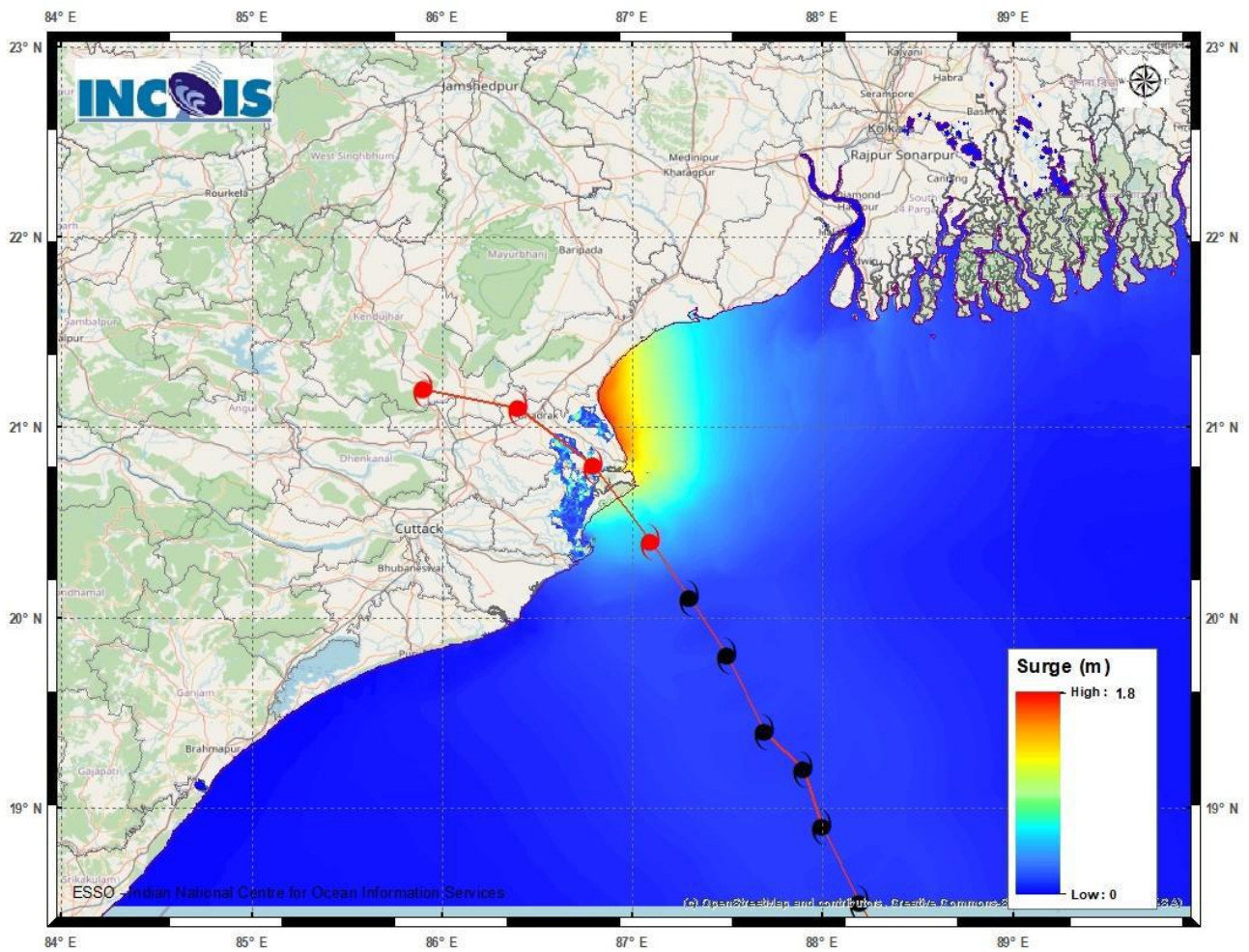
Contact: Cyclone Warning Division, Office of the Director General of Meteorology, India Meteorological Department, Ministry of Earth Sciences, [E-mail: cyclonewarningdivision@gmail.com](mailto:cyclonewarningdivision@gmail.com), Website: rsmcnewdelhi.imd.gov.in. Spatial rainfall distribution: Isolated: <25%, A few: 26-50%, Many: 51-75%, Most: 76-100%, Rainfall amount (mm): Heavy rain: 64.5 – 115.5, Very heavy rain: 115.6 – 204.4, Extremely heavy rain: 204.5 or more.



- Action may be taken based on **ORANGE AND RED** COLOUR warnings.
- Vulnerable regions likely urban and hilly areas action may be initiated for heavy rainfall warning.
- As the lead period increases forecast accuracy decreases.

Contact: Cyclone Warning Division, Office of the Director General of Meteorology, India Meteorological Department, Ministry of Earth Sciences, [E-mail: cyclonewarningdivision@gmail.com](mailto:cyclonewarningdivision@gmail.com), Website: rsmcnewdelhi.imd.gov.in. Spatial rainfall distribution: Isolated: <25%, A few: 26-50%, Many: 51-75%, Most: 76-100%, Rainfall amount (mm): Heavy rain: 64.5 – 115.5, Very heavy rain: 115.6 – 204.4, Extremely heavy rain: 204.5 or more.

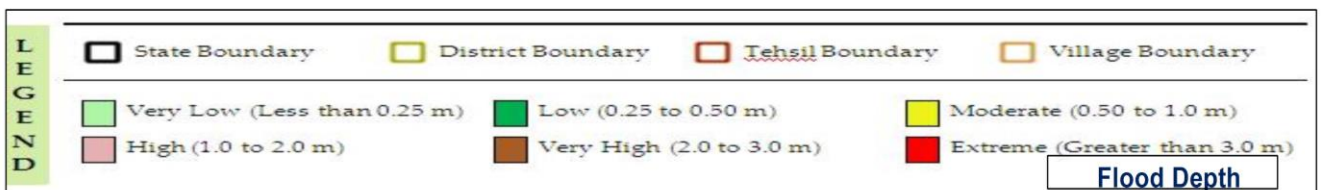
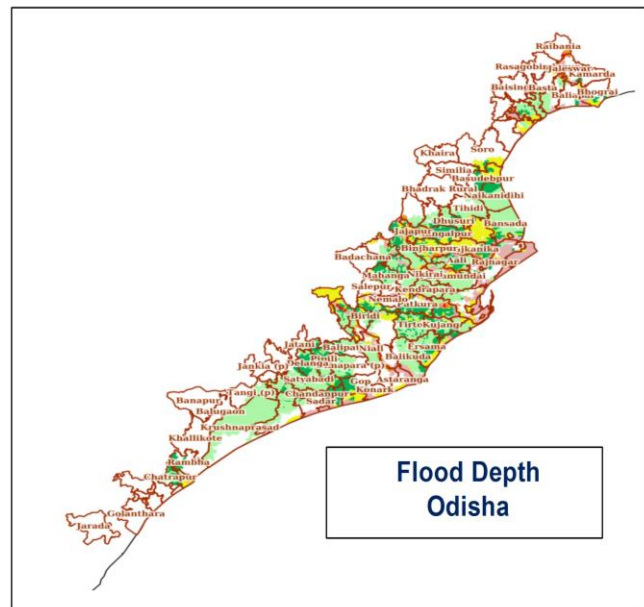
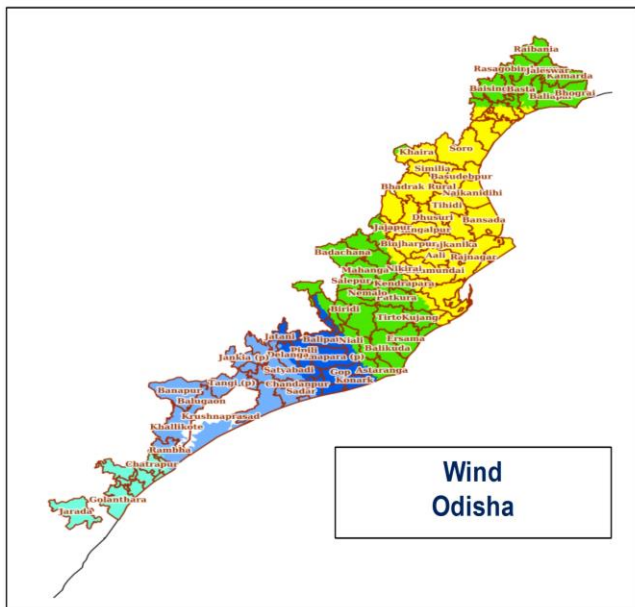
Storm Surge warning graphics



DISTRICT	STATE/UNION TERRITORY	NEAREST PLACE OF HABITATION	STORM SURGE (m)*	EXPECTED INUNDATION EXTENT (km)
Bhadrak	Odisha	Mohanpur	1.3-1.8	Upto 1.15
Baleshwar	Odisha	Kumbhigari	0.4-1.6	Upto 1.08
Kendrapara	Odisha	Tikayat Nagar	0.2-1.3	Upto 3.01
Jagatsinghpur	Odisha	Musadia	0.2-0.5	Upto 2.91
Purba Medinipur	West Bengal	Dakshin Purushottampur	0.3-0.5	Upto 0.98

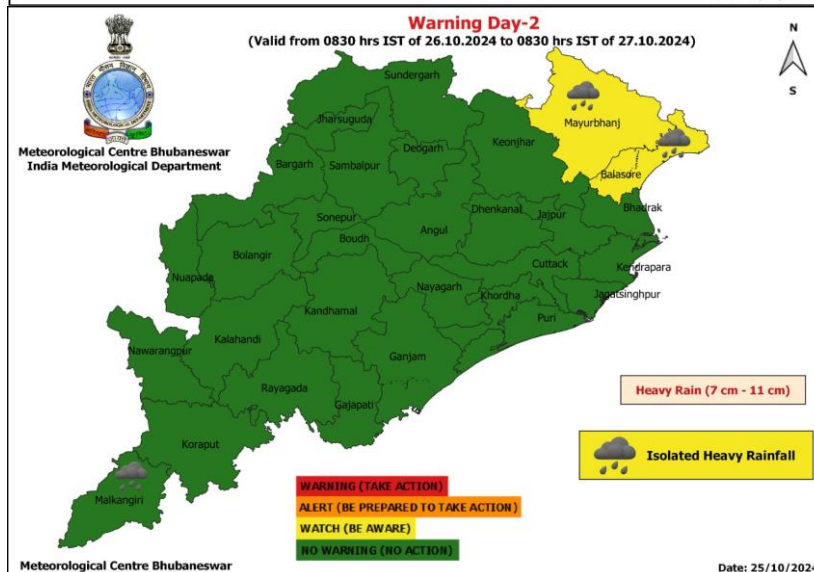
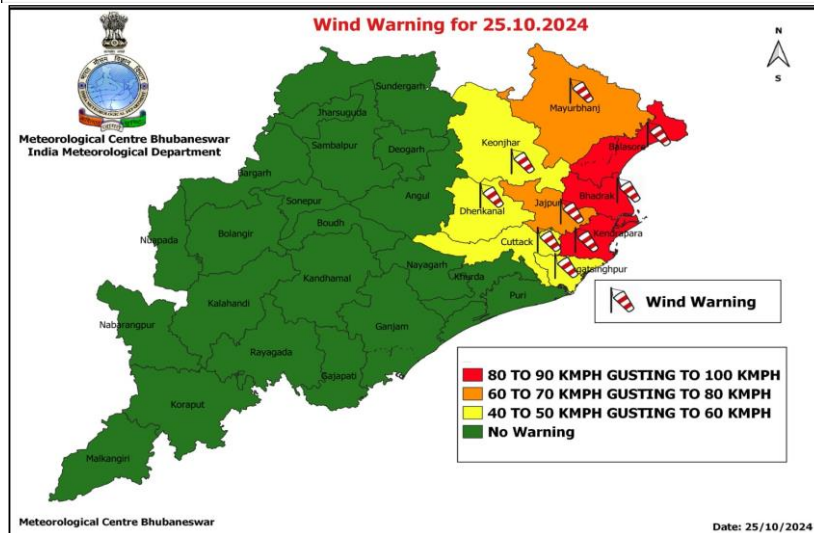
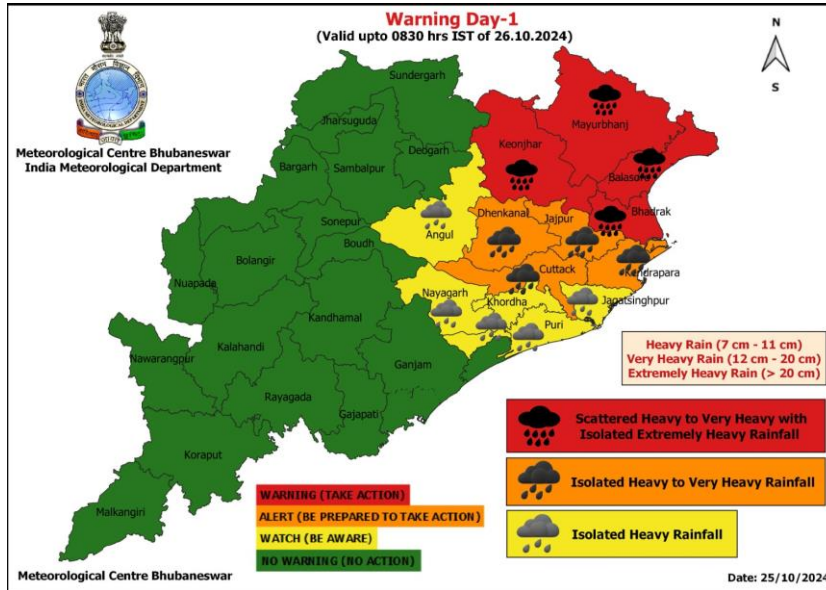
Contact: Cyclone Warning Division, Office of the Director General of Meteorology, India Meteorological Department, Ministry of Earth Sciences, [E-mail: cyclonewarningdivision@gmail.com](mailto:cyclonewarningdivision@gmail.com), Website: rsmcnewdelhi.imd.gov.in. Spatial rainfall distribution: Isolated: <25%, A few: 26-50%, Many: 51-75%, Most: 76-100%, Rainfall amount (mm): Heavy rain: 64.5 – 115.5, Very heavy rain: 115.6 – 204.4, Extremely heavy rain: 204.5 or more.

Impact Based Forecast by Web-Based Dynamic Composite Risk Atlas & Decision Support System (Web-DCRA & DSS)



Contact: Cyclone Warning Division, Office of the Director General of Meteorology, India Meteorological Department, Ministry of Earth Sciences, [E-mail: cyclonewarningdivision@gmail.com](mailto:cyclonewarningdivision@gmail.com), Website: rsmcnewdelhi.imd.gov.in. Spatial rainfall distribution: Isolated: <25%, A few: 26-50%, Many: 51-75%, Most: 76-100%, Rainfall amount (mm): Heavy rain: 64.5 – 115.5, Very heavy rain: 115.6 – 204.4, Extremely heavy rain: 204.5 or more.

WARNING MAPS FOR ODISHA



Contact: Cyclone Warning Division, Office of the Director General of Meteorology, India Meteorological Department, Ministry of Earth Sciences, [E-mail: cyclonewarningdivision@gmail.com](mailto:cyclonewarningdivision@gmail.com), Website: rsmcnewdelhi.imd.gov.in. Spatial rainfall distribution: Isolated: <25%, A few: 26-50%, Many: 51-75%, Most: 76-100%, Rainfall amount (mm): Heavy rain: 64.5 – 115.5, Very heavy rain: 115.6 – 204.4, Extremely heavy rain: 204.5 or more.

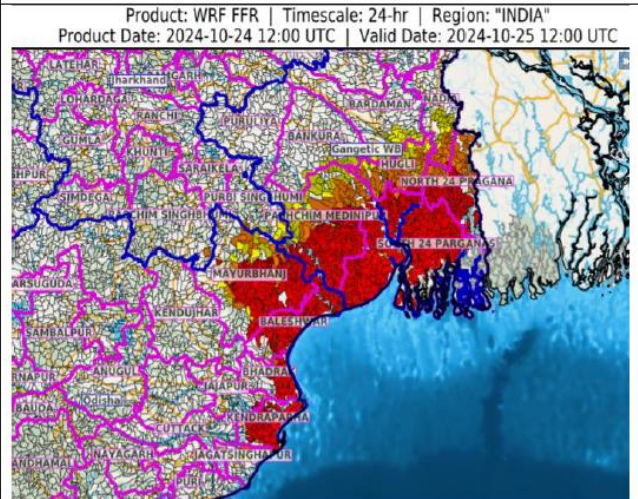
24 HOURS OUTLOOK FOR THE FLASH FLOOD RISK

24 hours Outlook for the Flash Flood Risk (FFR) till 1730 IST of 25-10-2024 :

Moderate to High flash flood risk likely over few watersheds & neighbourhoods of following Met Sub-divisions during next 24 hours.

Odisha - Baleshwar, Bhadrak, Jagatsinghapur, Kendraparha and Mayurbhanj districts.
Gangetic West Bengal - Bankura, Bardaman, Eastmednipur, Haora, Hugli, Nadia, North 24 Pragana, Pashchim Medinipur and South 24 Parganas districts.

Surface runoff/ Inundation may occur at some fully saturated soils & low-lying areas over AoC as shown in map due to expected rainfall occurrence in next 24 hours.



Flash Flood Risk



High Risk (Take Action)



Moderate Risk (Be Prepared)



Low Risk (Be Updated)

Contact: Cyclone Warning Division, Office of the Director General of Meteorology, India Meteorological Department, Ministry of Earth Sciences, [E-mail: cyclonewarningdivision@gmail.com](mailto:cyclonewarningdivision@gmail.com), Website: rsmcnewdelhi.imd.gov.in. Spatial rainfall distribution: Isolated: <25%, A few: 26-50%, Many: 51-75%, Most: 76-100%, Rainfall amount (mm): Heavy rain: 64.5 – 115.5, Very heavy rain: 115.6 – 204.4, Extremely heavy rain: 204.5 or more.

Fishermen Warning Graphics



Contact: Cyclone Warning Division, Office of the Director General of Meteorology, India Meteorological Department, Ministry of Earth Sciences, [E-mail: cyclonewarningdivision@gmail.com](mailto:cyclonewarningdivision@gmail.com), Website: rsmcnewdelhi.imd.gov.in. Spatial rainfall distribution: Isolated: <25%, A few: 26-50%, Many: 51-75%, Most: 76-100%, Rainfall amount (mm): Heavy rain: 64.5 – 115.5, Very heavy rain: 115.6 – 204.4, Extremely heavy rain: 204.5 or more.